

A Brief z/VM Update

February 2014 Announcements

Bill Bitner

z/VM Development Client Focus and Care

bitnerb@us.ibm.com



z/VM 6.3 RSU 1401



z/VM Release Status Summary



z/VM	Level	GA	End of Service	End of Marketing	Minimum Processor Level	Security Level
Version 6	Release 3	7/2013	4/2017		IBM System z10®	EAL 4+ ^[2] OSP-LS
	Release 2	12/2011	12/2016 ^[3]	3Q/2013	IBM System z10®	-
	Release 1	10/2009	4/2013	12 2011	IBM System z10®	EAL 4+ OSP-LS
Version 5	Release 4	9/2008	12/2014 ^[1]	3/2012	IBM eServer zSeries 800& 900 (z800, z900)	-
	Release 3	6/2007	9/2010	9/2010	z800, z900	EAL 4+ CAPP/LSPP

[1] Or later (Announced August 7, 2012)

[2] Targeted Security Level in V6.3 SOD

[3] Extended from original date (Announced February 4, 2014)

Marketed & Serviced

Serviced, but not Marketed

End of Service & Marketing

Extended support contracts are available.

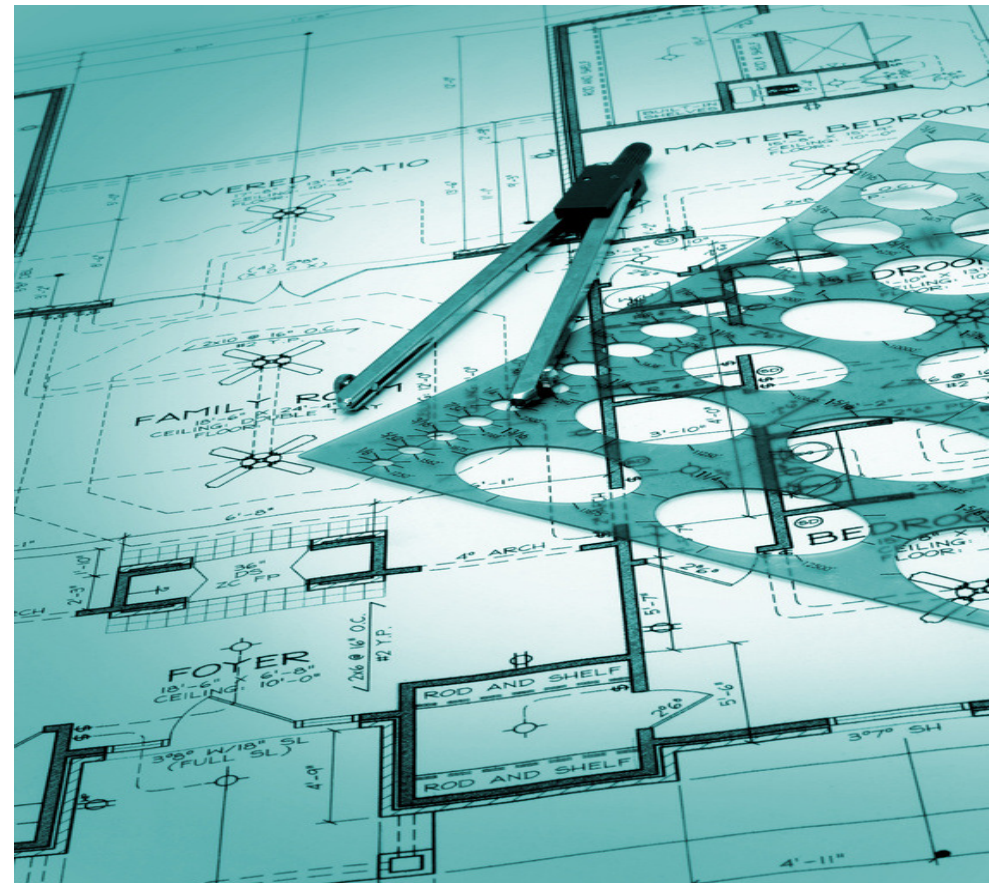
Enhancing the Foundation for Virtualization

- [Release for Announcement – zBX and zEnterprise System Enhancements](#)
 - February 24, 2014

- Software Enhancements
 - CPU Pooling
 - Environment Information Interface

- Hardware Support
 - 10GbE RoCE Express Feature
 - zEDC Express Feature

- Available June 27, 2014



CPU Pooling

- Fine grain CPU limiting for a group of virtual machines

- Define one or more pools in which a limit of CPU resources is set.

- Two flavors of limits:
 - LIMITHARD - Percentage of system
 - CAPACITY – Number of CPUs

- Coexists with individual limit shares
 - More restrictive limit applies

- Support Details
 - z/VM 6.3 with APAR VM65418 - June 27, 2014



Environment Information Interface

- New interface allow guest to capture execution environment
 - Configuration and Capacity information
 - Various Levels:
 - Machine, logical partition, hypervisor, virtual machine

- New problem statement instruction Store Hypervisor Information (STHYI)

- Includes support for CPU Pooling enhancement

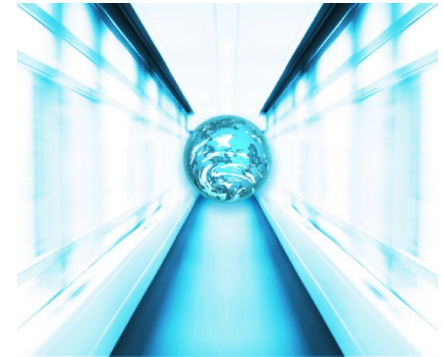
- Foundation for future software licensing tools

- Support details:
 - z/VM 6.3 with APAR VM65419 – June 27, 2014



10GbE RoCE Express Feature

- Support for RDMA over Converged Ethernet for guests
- Based on new hypervisor PCIe support
- Designed to support z/OS's Shared Memory Communications-Remote Direct Memory Access (SMC-R) in z/OS V2.1
- Helps reduce CPU resource consumption
- Support details:
 - IBM zEC12 or zBC12 with appropriate millicode (driver 15)
 - z/VM 6.3 with APAR VM65417 – June 27, 2014
 - z/OS 1.12, z/OS 1.13, z/OS 2.1 with APAR OA43256
 - Fulfills 2013 Statement of Direction



zEDC Express Feature

- Guest support for zEDC Express Feature
- High performance, low latency, low CPU consumption compression
- Possible disk utilization reduction
- Support details:
 - IBM zEC12 or zBC12 with appropriate millicode (driver 15)
 - z/VM 6.3 with APAR VM65417 – June 27, 2014
 - z/OS 1.12, z/OS 1.13, z/OS 2.1 with APAR OA43256
 - z/OS 1.12, z/OS 1.13, z/OS 2.1 with APAR OA44482
 - Fulfills 2013 Statement of Direction



IBM Cloud Management Suite for System z V1.1

- Benefits:
 - Quickly and easily provision a workload on System z
 - Self service portal running on distributed system
 - Monitor health of cloud environment
 - Linux server backup
 - Integration of various key management components

- Components include:
 - IBM SmartCloud® Orchestrator
 - OMEGAMON XE on z/VM and Linux
 - Tivoli Storage Manager Extended Edition

- Known at times as “CMSz”

- Requires z/VM 6.3 with appropriate service

- See <http://www.vm.ibm.com/sysman/openstk.html>

- Dates:
 - Announced February 25, 2014
 - Planned Availability March 14, 2014



Questions?